

# **TOSHIBA**

**Leading Innovation >>>**

---

## Summary of Consolidated Financial Statements for the FY2007(ended March 2008)

2008/4/28

**TOSHIBA PLANT SYSTEMS & SERVICES CORPORATION**

# Contents

---

1. Consolidated Summary
2. Consolidated Orders by Operating Divisions
3. Consolidated Sales by Operating Divisions
4. Order of Backlog by Operating Divisions
5. The Principal Expenses
6. Non-TOSHIBA Group Business
7. The Principal Indexes
8. Non-Consolidated Summary

# 1. Consolidated Summary

(Millions of yen)

	FY2006(ended March 2006)		FY2007(ended March 2008)		FY2008(ending March 2009)	
		change		change	(Anticipation)	change
Net Orders	164,410	20,813 14.5%	171,354	6,944 4.2%	183,000	11,645 6.8%
Net Sales	164,737	20,476 14.2%	178,518	13,781 8.4%	156,000	△22,518 △12.6%
Operating Income	8,929	4,374 96.0%	10,789	1,859 20.8%	8,200	△2,589 △24.0%
Ordinary Income	9,168	4,272 87.2%	11,039	1,870 20.4%	8,500	△2,539 △23.0%
Net Income	5,024	2,436 94.2%	6,285	1,261 25.1%	4,800	△1,485 △23.6%
Per Share of Common stock	51.52yen		64.47yen		—	
Number of Employees	3,951		3,967		—	

## 2. Consolidated Orders by Operating Divisions

(Millions of yen)

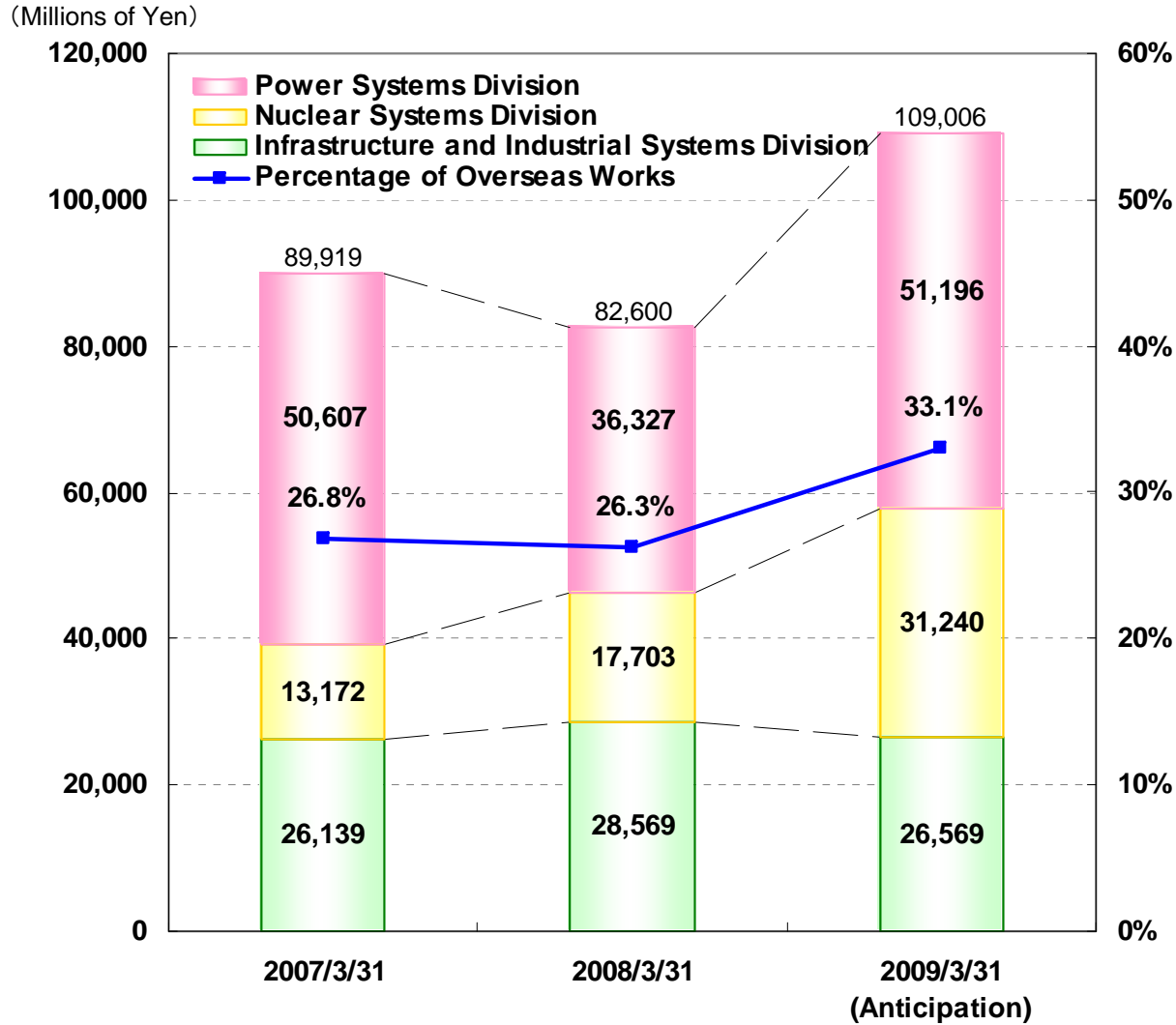
		FY2006(ended March 2006)		FY2007(ended March 2008)		FY2008(ending March 2009)	
			change		change	(Anticipation)	change
	Thermal Power Plants	42,449	1,725 4.2%	32,550	△9,898 △23.3%	47,500	14,949 45.9%
	Hydroelectric Power Plants and Substation Facilities	13,334	2,498 23.1%	14,617	1,282 9.6%	12,500	△2,117 △14.5%
Total of Power Systems Division		55,783	4,223 8.2%	47,168	△8,615 △15.4%	60,000	12,831 27.2%
Total of Nuclear Systems Division		34,677	7,884 29.4%	37,578	2,900 8.4%	52,000	14,421 38.4%
Total of Infrastructure and Industrial Systems Division		73,948	8,705 13.3%	86,608	12,659 17.1%	71,000	△15,608 △18.0%
Grand Total		164,410	20,813 14.5%	171,354	6,944 4.2%	183,000	11,645 6.8%
Overseas Works		33,180	13,851 71.7%	24,294	△8,886 △26.8%	36,500	12,205 50.2%

### 3. Consolidated Sales by Operating Divisions

(Millions of yen)

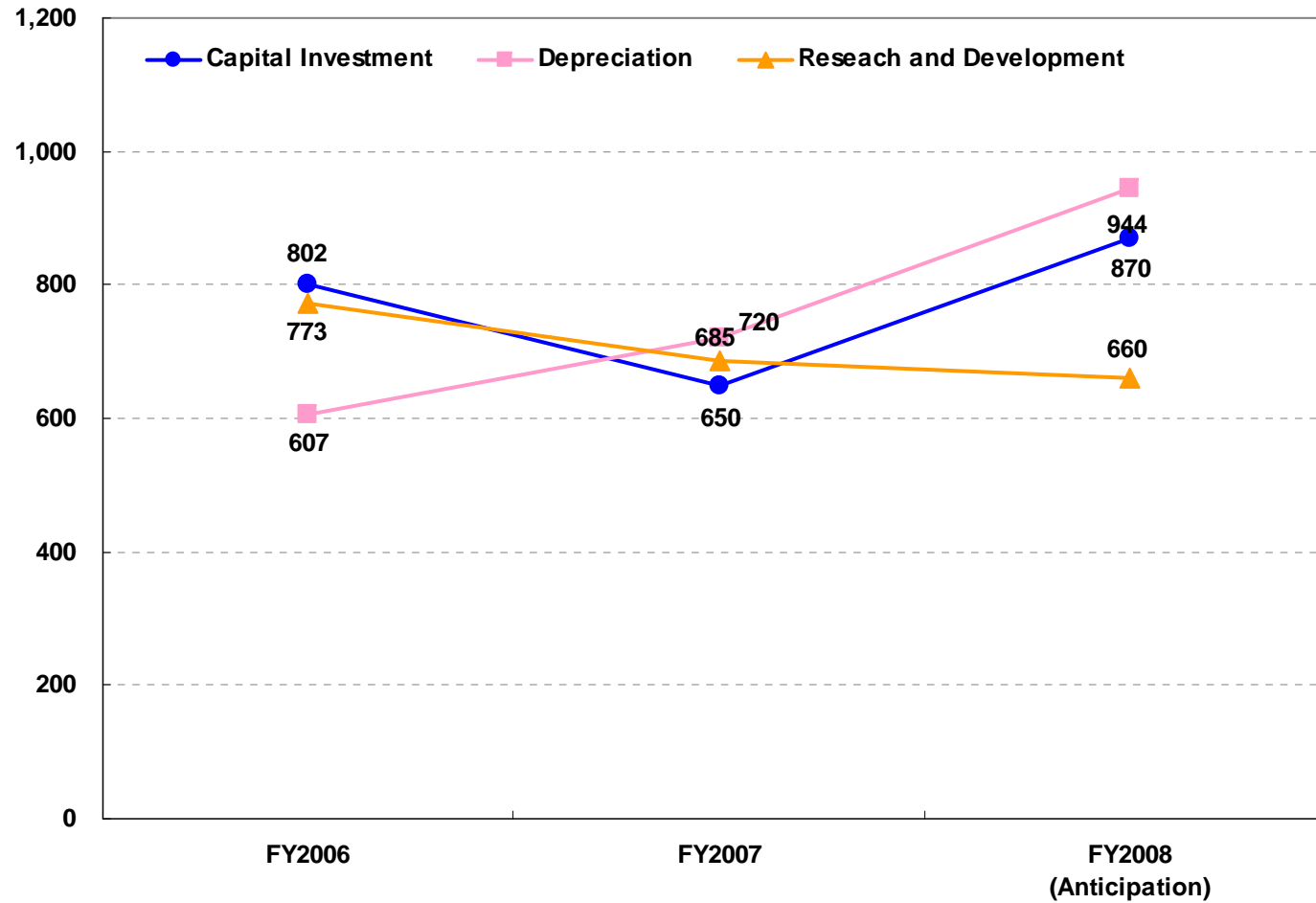
	FY2006(ended March 2006)		FY2007(ended March 2008)		FY2008(ending March 2009)	
		change		change	(Anticipation)	change
Thermal Power Plants	43,333	△462 △1.1%	49,406	6,072 14.0%	31,000	△18,406 △37.3%
Hydroelectric Power Plants and Substation Facilities	10,014	△10 △0.1%	11,801	1,787 17.8%	13,500	1,698 14.4%
<b>Total of Power Systems Division</b>	<b>53,348</b>	<b>△473</b> <b>△0.9%</b>	<b>61,207</b>	<b>7,859</b> <b>14.7%</b>	<b>44,500</b>	<b>△16,707</b> <b>△27.3%</b>
<b>Total of Nuclear Systems Division</b>	<b>38,538</b>	<b>6,994</b> <b>22.2%</b>	<b>33,047</b>	<b>△5,491</b> <b>△14.2%</b>	<b>38,500</b>	<b>5,452</b> <b>16.5%</b>
<b>Total of Infrastructure and Industrial Systems Division</b>	<b>72,850</b>	<b>13,955</b> <b>23.7%</b>	<b>84,263</b>	<b>11,413</b> <b>15.7%</b>	<b>73,000</b>	<b>△11,263</b> <b>△13.4%</b>
<b>Grand Total</b>	<b>164,737</b>	<b>20,476</b> <b>14.2%</b>	<b>178,518</b>	<b>13,781</b> <b>8.4%</b>	<b>156,000</b>	<b>△22,518</b> <b>△12.6%</b>
Overseas Works	32,806	△10,041 △23.4%	26,504	△6,302 △19.2%	22,000	△4,504 △17.0%

# 4. Order of Backlog by Operating Divisions

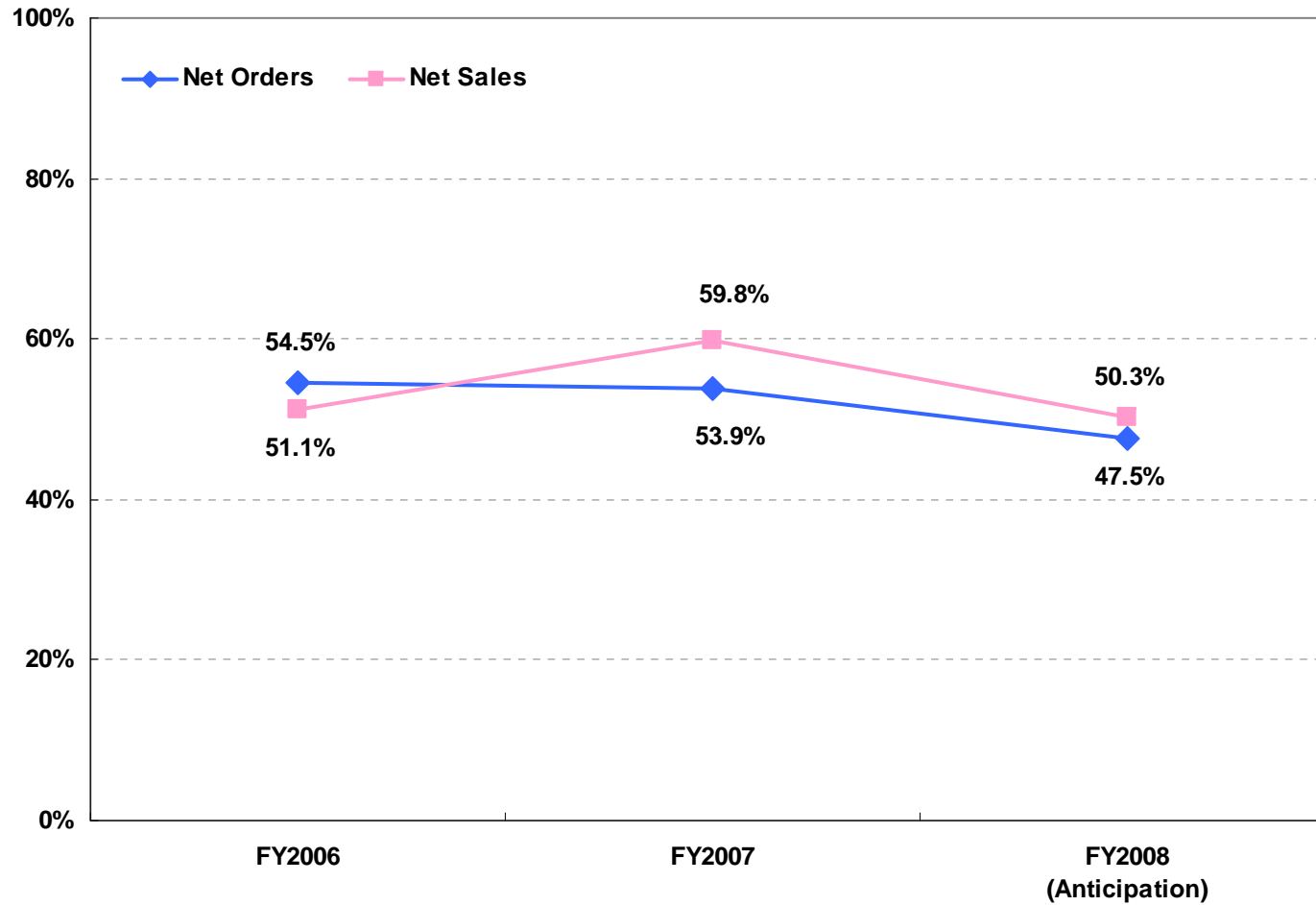


# 5. The Principal Expenses

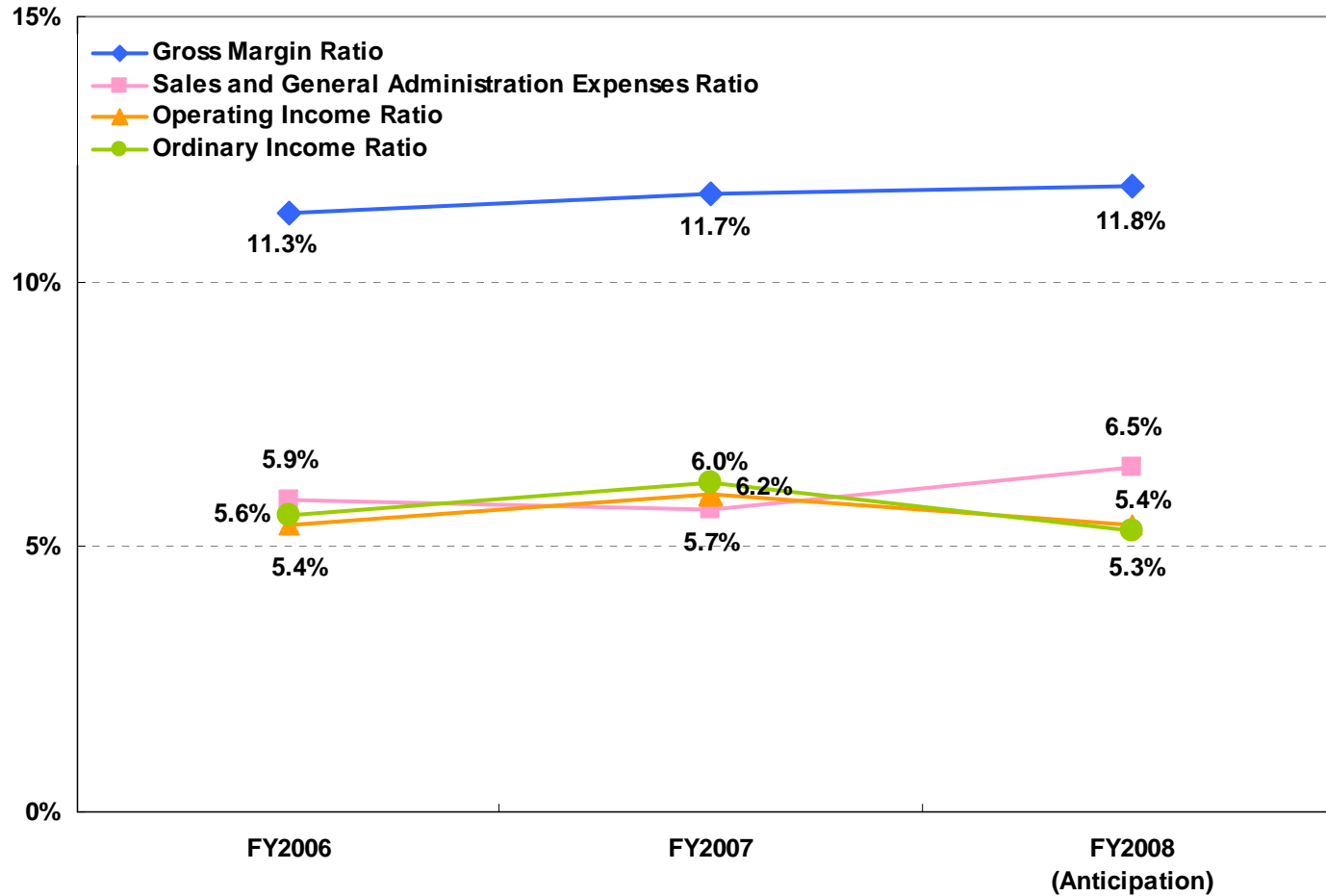
(Millions of Yen)



# 6. Non-TOSHIBA Group Business



# 7. The Principal Indexes



## 8. Non-Consolidated Summary

(Millions of yen)

	FY2006(ended March 2006)		FY2007(ended March 2008)		FY2008(ending March 2009)	
		change		change	(Anticipation)	change
Net Orders	158,819	19,356 13.9%	159,123	304 0.2%	179,000	19,876 12.5%
Net Sales	157,996	19,448 14.0%	169,163	11,166 7.1%	150,000	△19,163 △11.3%
Operating Income	8,033	4,096 104.0%	9,812	1,779 22.1%	7,600	△2,212 △22.6%
Ordinary Income	8,488	4,185 97.3%	10,068	1,579 18.6%	8,000	△2,068 △20.5%
Net Income	4,736	2,732 136.4%	5,806	1,070 22.6%	4,500	△1,306 △22.5%
Per Share of Common stock	48.57yen		59.56yen		—	
Number of Employees	3,185		3,187		—	